

Current part is item (12) on diagram. Available at [www.oshkoshequipment.com](http://www.oshkoshequipment.com)

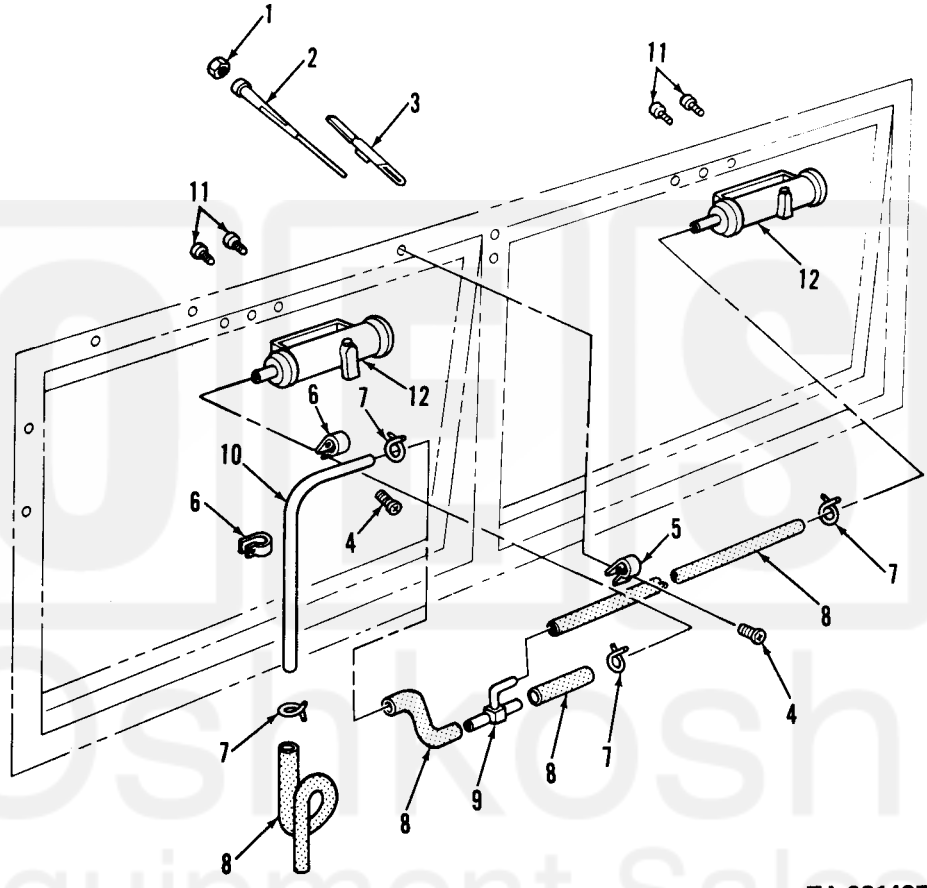
(1) FIG. NO.	(2) ITEM NO.	(3) SMR CODE	(4) NATIONAL STOCK NUMBER	(5) PART NUMBER	(6) FSCM	(7) DESCRIPTION U/M	(8) INC IN UNIT
--------------------	--------------------	--------------------	------------------------------------	-----------------------	-------------	---------------------------	--------------------------

2202-ACCESSORY ITEMS

329	1	PAOZZ	5310-00-705-8965	7058965	19207	NUT, PLAIN, CAP: CLAMPING, WINDSHIELD WIPER ARM TO MOTOR	EA 2
329	2	PAOZZ	2540-00-050-0810	MS53049-1	96906	ARM, WINDSHIELD WIPER: ADJ, 7-1/2 CLOSED, 12 EXTENDED	EA 2
329	3	PAOZZ	2540-00-640-2567	MS53048-10	96906	BLADE, WINDSHIELD WIPER: 10 IN. LG.	EA 2
329	4	PAOZZ	5305-00-855-0957	MS24629-46	96906	SCREW, TAPPING, THREAD FORMING	EA 4
329	5	PAOZZ	5340-00-984-8540	MS21333-102	96906	CLAMP, ELECTRICAL	EA 1
329	6	PAOZZ	5340-00-057-2890	MS21333-3	96906	CLAMP, LOOP	EA 3
329	7	PAOZZ	4730-00-727-9627	7279627	19207	CLAMP, HOSE: WINDSHIELD WIPER HOSE CONNECTIONS	EA 8
329	8	MOOZZ		7331422	19207	HOSE, RUBBER: WINDSHIELD WIPER (1 PIECE 15-1/2 IN. LG, 1 PIECE 7 IN. LG, 1 PIECE 2 IN. LG, 1 PIECE 34 IN. LG) (58 1/2 IN. REQUIRED TOTAL) (MFD FROM HOSE, 4720-00-203-2668	EA 1
329	9	PAOZZ	4730-00-737-2701	7372701	19207	TEE, HOSE: WINDSHIELD WIPER MOTOR LINE	EA 1
329	10	MOOZZ		8689206	19207	TUBE, COPPER: SEAMLESS, COLD-DRAWN, SOFT ANLD, 1/4 OD, 0.035 WALL THK, 17-1/2 IN. LG (MFD FROM TUBE, 4710-00-277-5525)	EA 1
329	11	PAOZZ	5305-00-165-8252	7372704	19207	SCREW, ASSEMBLED WASHER	EA 4
329	12	PAOZZ	2540-00-391-4322	MS53017-1	96906	MOTOR, WINDSHIELD	EA 2
330		PAOZZ	2540-00-279-8180	11623693	19207	WINDSHIELD WASHER INSTALLATION KIT AC	EA 1
330	1	PAOZZ	2540-00-003-8346	11644865	19207	RESERVOIR: WINDSHIELD WASHER ASSEMBLY AC	EA 1
330	2	XBOZZ	2540-00-295-7875	11676884	19207	PLATE: WINDSHIELD WASHER, RESERVOIR TO STEERING COLUMN AC	EA 1
330	3	PAOZZ	2540-00-264-8812	11640666	19207	STRAINER: WINDSHIELD WASHER RESERVOIR, LEKTOMESH SCREEN AC	EA 1
330	4	MOOZZ		11639682-3	19207	HOSE, RUBBER: WINDSHIELD WASHER, 39 IN. L, .472 OD, 236 ID (MFD FROM TUBE, NSN 4720-00-182-9121) AC	EA 1
330	5	PAOZZ	5325-00-276-6100	MS35489-14	96906	GROMMET, RUBBER: SPLIT, DASH PANEL AC	EA 1
330	6	PAOZZ	4730-00-K20-0341	11676885	19207	TEE, CONNECTOR: WINDSHIELD WASHER, PLASTIC POLYAMIDE, 1.62 ACROSS, 2.50 OD, 3 PLACES AC	EA 1
330	7	MOOZZ		11639682-2	19207	HOSE, RUBBER: WINDSHIELD WASHER, 3 IN. L, .472 OD, .236 ID (MFD FROM TUBING, 4720-00-182-9121) AC	EA 1



Current part is item (12) on diagram. Available at [www.oshkoshequipment.com](http://www.oshkoshequipment.com)



TA 031425

Figure 329. Windshield wipers, motors.